

Specifications

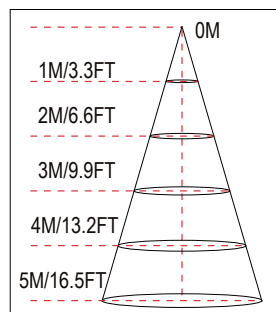
Model#	WSL-CL-12in-14w
UPC Code	858727007242
Description	12"LED Round Puff Light,Double Ring
Power	14W
Voltage Input	120Vac,60HZ
Lumen output	1100lm or 79 lm/W
CCT	2700K,3000K,4000K, 5000K
CRI	Ra>80
Housing	Finish Steel base
Application	Indoor Only
Driver	UL certified
Lens	PS
Operating Temp.	-13F - 104F
IP Rating	IP20
Certificates	ETL/cETL,Energy Star
warranty	3 years
Dimmable	Yes
Product Dimension	12"DIA x3.74" H (305 x 305 x 95 mm)



Order Information

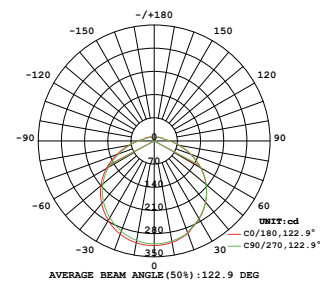
Item Number	Description	Power	Voltage Input	Driver	CCT	Lumen Output	Certificates
WSL-CL-12in-14w	12" Double Ring Ceiling Light	14W	120Vac	UL Certified	2700K,3000K 4000K,5000K	1100lm	ETL/cETL , Energy Star

Lux Chart

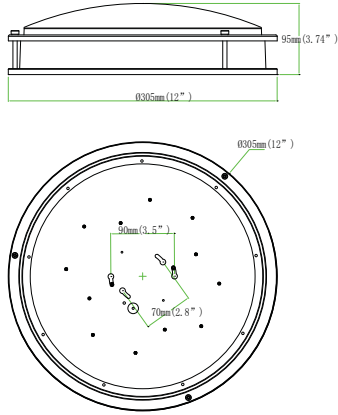


Height	Average Lux (lx)	Light range (dia.)
1M/3.3FT	69.7	145 in
2M/6.6FT	17.4	290 in
3M/9.9FT	7.7	434 in
4M/13.2FT	4.4	579 in
5M/16.5FT	2.8	724 in

Photometrics

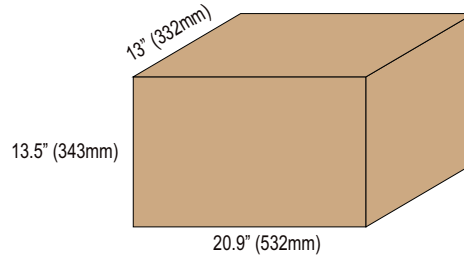


Product Size

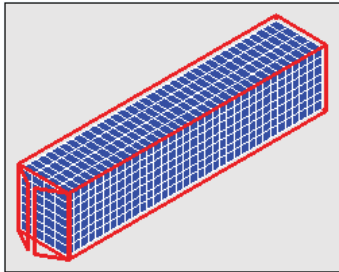


Packaging

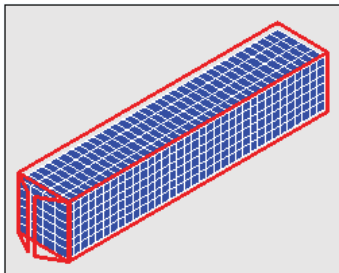
5pcs/CTN G.W.:13.2 LBS
Dimension: 20.9"L x 13"W x 13.5"H (532mm x 332mm x 343mm)



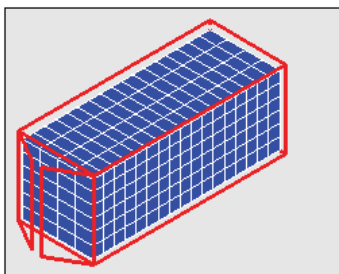
Container Loading QTY



Size	Corton QTY	Product QTY	Volumn	G.W.
40'hq	980 ctn	4900 pcs	2260 ft ³	12963 lbs



Size	Corton QTY	Product QTY	Volumn	G.W.
40'gp	840 ctn	4200 pcs	1907 ft ³	11111 lbs



Size	Corton QTY	Product QTY	Volumn	G.W.
20'gp	408 ctn	2040 pcs	918 ft ³	5397 lbs