



WORLD SMARTLED®

the smarter choice in lighting

POWERED BY USA ENERGY LLC



LED Area Light



Premium Warranty

Integrated Wireless Mesh Network Controller,
Motion Sensor, Daylight Sensor



ZigBee®

Product Description

Sensor Motion/PIR sensor, Photocell
UL

LEDs: SMD 2835

120-277Vac 1-10V dimmable

Efficacy: 130LM/W

Temperature: -40°F-113°F(-40°C to 45°C)

Non-flicker, protect your eyes

PF>0.90

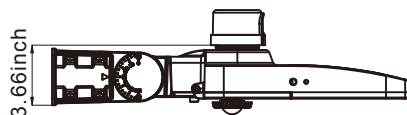
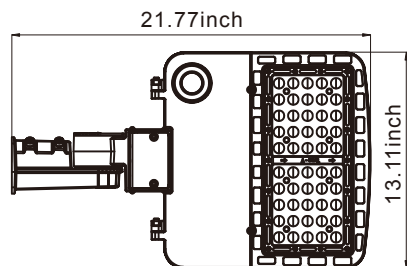
IP 66

CRI >80

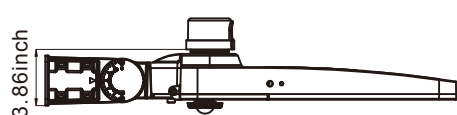
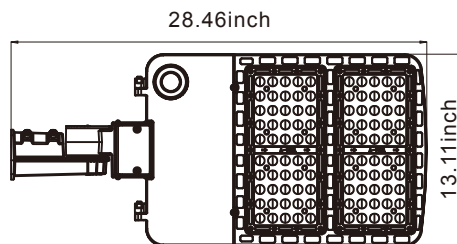
5 years warranty

Dimensions

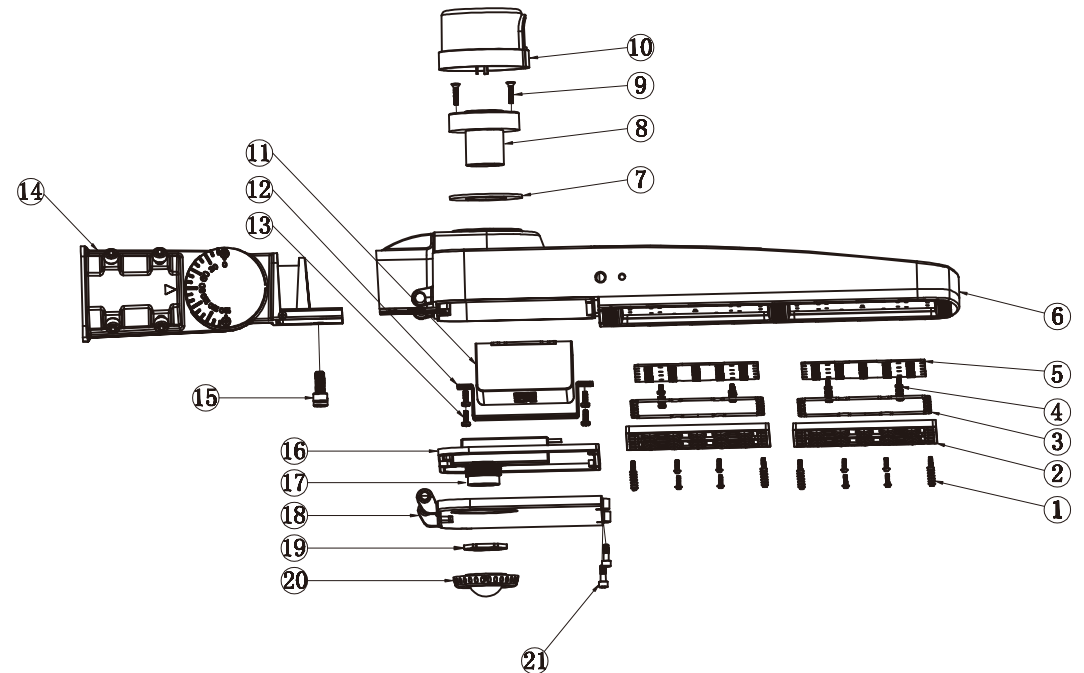
100-200W



240-300W



Structures



- | | |
|--|--|
| 1: Fixing lens screw | 12: Power supply bracket |
| 2: Siamese lenses | 13: Fixing the power supply bracket screws |
| 3: Lens waterproof ring | 14: A mounting bracket |
| 4: Fixing PCB board screws | 15: Fixing bracket and lamp body screws |
| 5: LED components | 16: Power compartment cover waterproof ring |
| 6: Light body | 17: Infrared sensor |
| 7: Waterproof base of light control base | 18: Power supply compartment cover |
| 8: Light control base | 19: Fixed infrared sensor nut |
| 9: Fix the light control base screw | 20: Infrared sensor plastic cover |
| 10: Photoreceptor | 21: M5 screw for fixing the power supply compartment |
| 11: Power drive | |

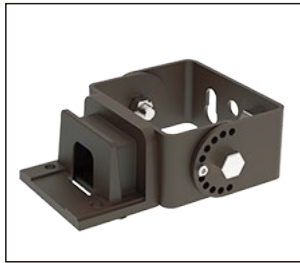
Accessories (optional)



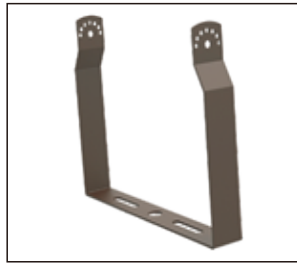
A



B

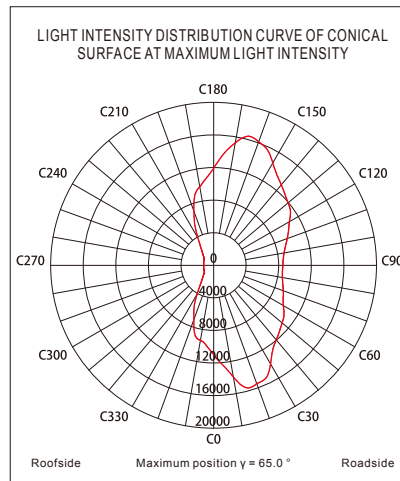
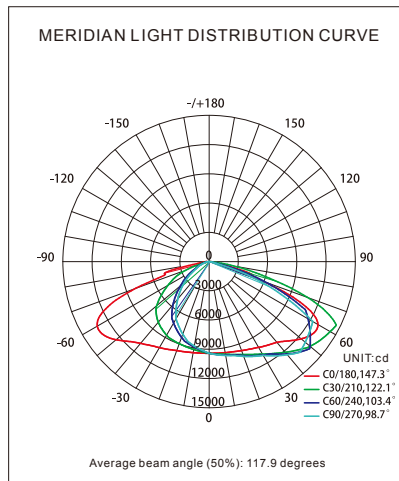


C



D

Luminaire Photometric Test Report



Ordering information

Model No.	Watts (W)	Input Voltage	Lumens	CCT (K)	Size (inch)	N.W (kg)
USA-JLSTL-150W-SPBBL[DDM,DDS]	150	120-277Vac	130 LM/W	4000K 5000K 5700K	21.77*13.11*3.66	5.53
USA-JLSTL-240W-SPBBL[DDM,DDS]	240				2846*13.11*3.86	7.89
USA-JLSTL-300W-SPBBL[DDM,DDS]	300					8.49

PS:

DDM	Dimming function	DDS	Dimming+Sensing function
BB=40 (4000K), 50 (5000K), .57 (5700K)			

Packaging Information

Model No.	Watts (W)	N.W (lbs)	Carton Size (inch)	QTY/ (pcs)	G.W/ (lbs)	Qty loaded by 20GP	Qty loaded by 40GP	Qty loaded by 40HQ
JLSTL-150W	150	11.75	23.46*15.08*6.22	1	14.09	810	1800	2040
JLSTL-240W	240	17.39	30.24*14.69*6.22	1	20.08	630	1350	1530
JLSTL-300W	300	17.72	30.24*14.69*6.22	1	21.41	630	1350	1530