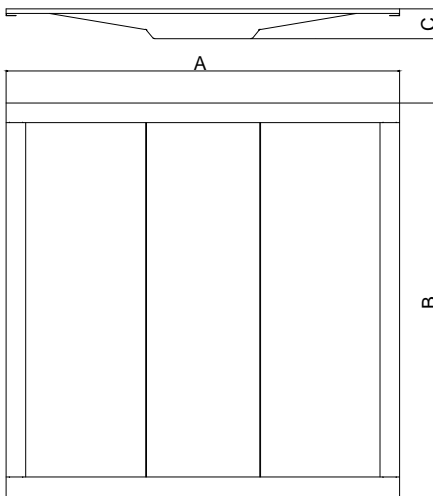


## LED TROFFER FIXTURE(New Construction)



Maximum overall	A	B	C
2*	603mm	603mm	45mm
2*4ft	603mm	1213mm	45mm



## FEATURES

Input voltage: AC100-277V

Operating frequency: 50/60Hz

Power factor: > 0.95

Ambient temperature range: -20°C ~+45°C

Color Temp: 3000K~5000K

Dimmable: 3-in-1 dimming

THD: ≤10%

IP Rating: IP40

CRI: >Ra80

Beam angle: 120°

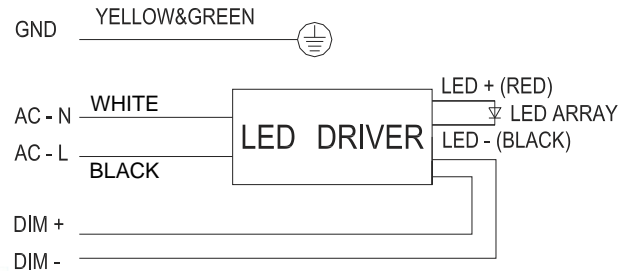
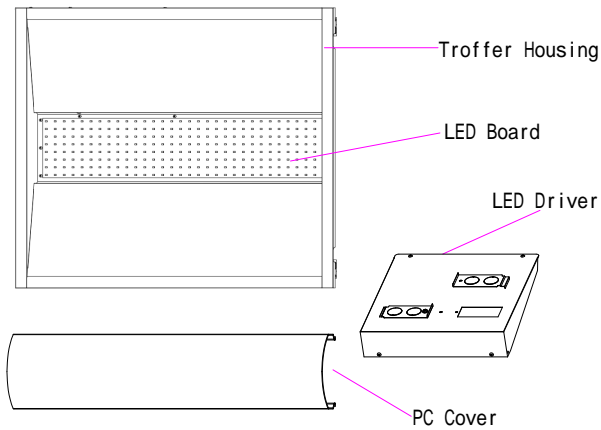
● Cloud series led troffer gives >130lm/W .

● Suitable for Damp Location

● 5 years' warranty .

## PARAMETER

Length	Product code	Certification	CRI	Wattage	Description		Lumens 3000-5000K	Packing/carton	G.W./carton
					Function				
2x2ft	ZS-TF2*2-Q01-F30-CC	ETL,FCC,CE	>80	30W	3-in-1 dimming(0-10V;PWM;Rx)		3900 LM	650*130*650mm 2 pieces 1*40HQ Loading=2592pcs	8kg
	ZS-TF2*2-Q01-F40-CC	ETL,DLC,FCC,CE	>80	40W	3-in-1 dimming(0-10V;PWM;Rx)		5200 LM		
	ZS-TF2*2-Q01-F50-CC	ETL,FCC,CE	>80	50W	3-in-1 dimming(0-10V;PWM;Rx)		6500 LM		
2x4ft	ZS-TF2*4-Q01-F40-CC	ETL,FCC,CE	>80	40W	3-in-1 dimming(0-10V;PWM;Rx)		5200 LM	1260*130*650mm 2 pieces 1*40HQ Loading=1332pcs	14kg
	ZS-TF2*4-Q01-F50-CC	ETL,DLC,FCC,CE	>80	50W	3-in-1 dimming(0-10V;PWM;Rx)		6500 LM		
	ZS-TF2*4-Q01-F55-CC	ETL,FCC,CE	>80	55W	3-in-1 dimming(0-10V;PWM;Rx)		7150 LM		

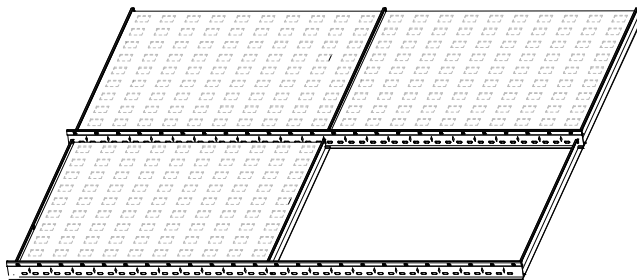


## Electric Shock Attention

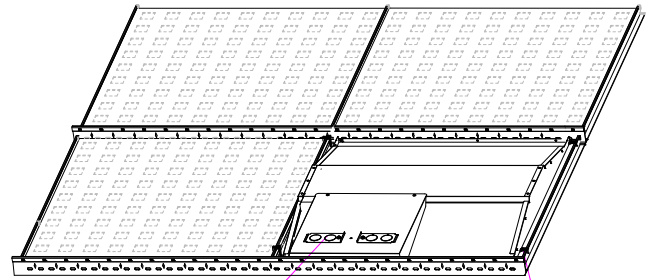
Ensure the power supply has been cut off before connecting the wire, and all wiring and installation of this product are required to be operated by professionals.

## INSTALLATION INSTRUCTION

Step1

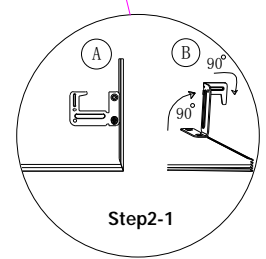
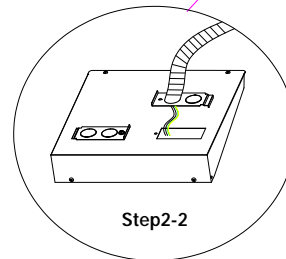
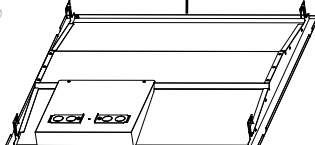
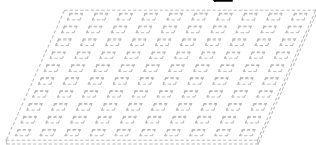


Step2



Step1-1

Step1-2



Step 1: Make sure of all the power is off before installing. Remove the one ceiling tile that you need to install light fixture on. Then place the light fixture on the T-bar carefully and make sure it is correctly in place and secure.

Step 2: Lift the 4 buckles on the back of the panel up by 90° then bend the top part of the buckles 90° towards the direction where you can anchor the light fixture to the T-bar.

Step 3: Open the driver's junction box and connect the AC wire to the driver correctly (L=black & N=white)

### Warning:

Ensure the power supply has been cut off before connecting the wire, and all wiring and installation of this product are required to be operated by professionals.